

BLOCK 21, PLAT C

LOTS 1-5 & 8-10

WALLACE SUBDIVISION

OF LOTS 6 & 7

IN OGDEN CITY

SCALE 1" = 50'

18

TAXING UNIT: 25

26TH

STREET

SEE PAGE 25

BOULEVARD

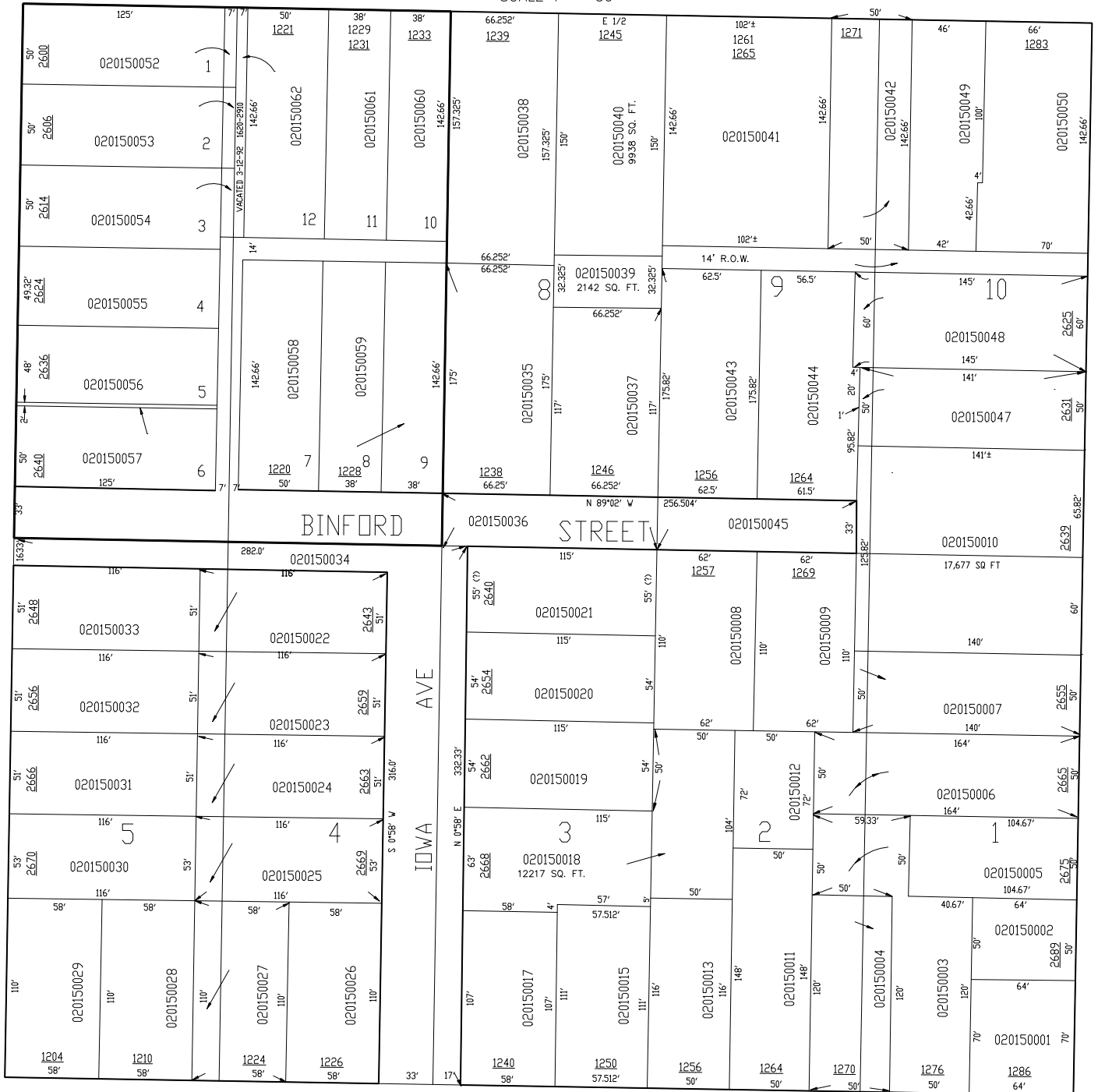
SEE PAGE 19

HARRISON

AVENUE

SEE PAGE 17

TYLER



26TH

SEE BOOK 14, PAGE 89

FOR COMPLETE ENG DATA SEE
ORIGINAL DEDICATION PLAT IN
BOOK 2, PAGES 1-4 AND
BOOK 6, PAGE 36 OF RECORDS.

STREET

NOTE: OGDEN CITY ENG. DEPT. DATA SHOWS
EACH LOT AS BEING 132.56' X 332.325'

JPS 7-95